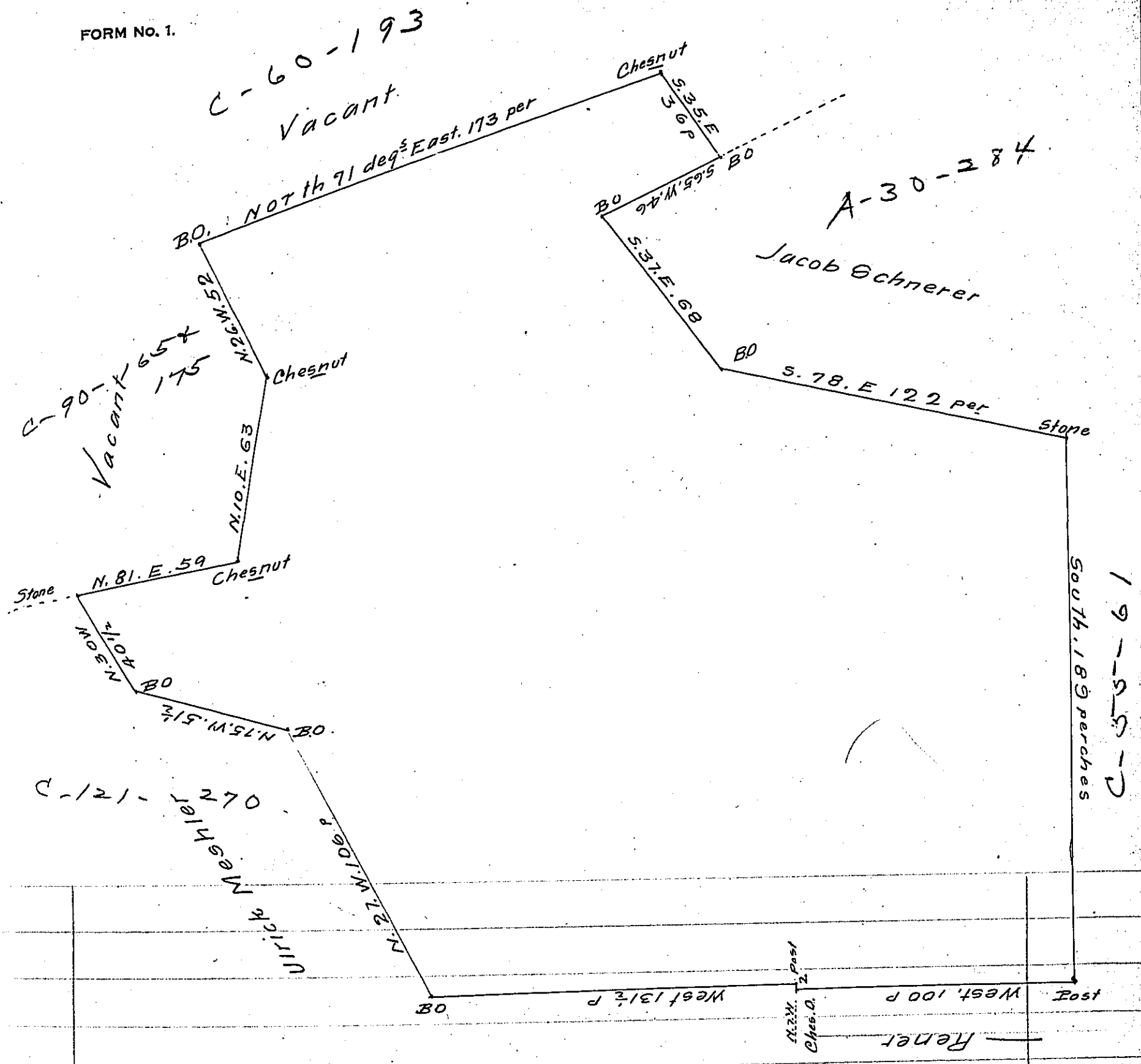


FORM NO. 1.



The above Draught contains four several surveys three of which were made to Hans Comer and one to Abraham Wideman viz 235^a to Hans Comer by Warr^t of the 21st of March 1736. One other Tract containing 54^a and another 38^a both surveyed to the said Hans Comer by Warrant dated the 27th of November 1745. also a Tract adjoining the above Tracts surveyed to Abraham Wideman by Warrant dated the 30th May 1749. Containing 91^a all which Tracts ly contiguous and are described in one Tract bounded and limited as by the above Draught.

IN TESTIMONY that the above is a copy of the original remaining on file in the Department of Internal Affairs of Pennsylvania, made conformably to an Act of Assembly approved the 16th day of February 1833, I have hereunto set my hand and caused the Seal of said Department to be affixed at Harrisburg, this first day of May 1907

Geo. P. Brown
 Secretary of Internal Affairs.